



Red Seal Electric Company

Service Oriented, High Quality Non-Metallic Materials Fabricator Since 1946

March 31, 2006

Subject: Cytex Cyply® Vibratory Leaf Spring Template

Please find attached the following data sheets to help us prepare a quote on your leaf spring requirements; we can quote directly to your RFQ/drawing if available:

1. This data entry sheet;
2. A template with the most common leaf spring configurations; and
3. A current list of Cyply® Unidirectional and Crossply grades.

Company Name _____
Contact Name _____
Telephone/Fax _____

Part Number _____
Figure No. _____
Material Grade _____

On parts using Unidirectional grade material, unless otherwise specified the primary direction of outer ply's to run the length of the part.

Quantity _____

Dimensions

Length _____
Width _____
Hole Diameter _____

Standard tolerances: length & width +/- .020", hole location +/- .010", hole diameter +.010/-.005

Where applicable

Dim 'A' _____
Dim 'B' _____
Dim 'C' _____
Dim 'D' _____
Dim 'E' _____
Dim 'F' _____

Please fax or mail the completed form to Red Seal, (216.941.5305). We will quote promptly upon receipt. Thank you for your interest in our products and services.

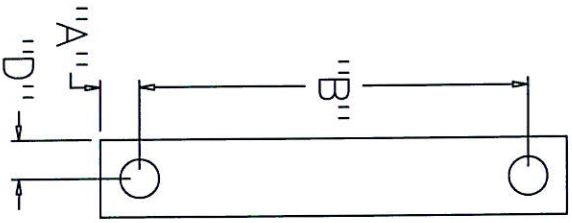


FIGURE #1

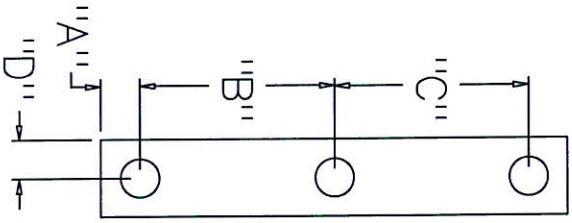


FIGURE #2

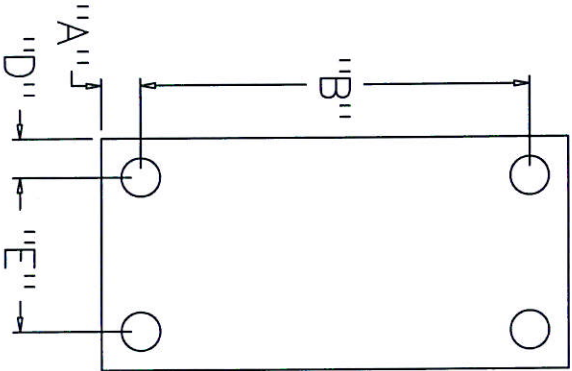


FIGURE #3

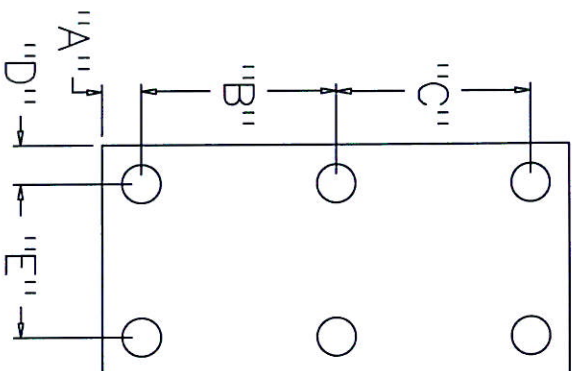


FIGURE #4

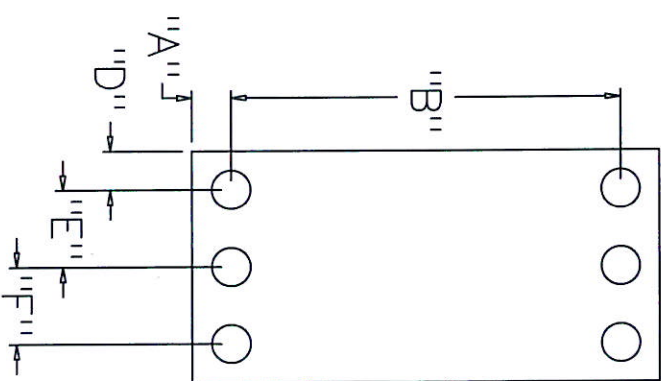


FIGURE #5

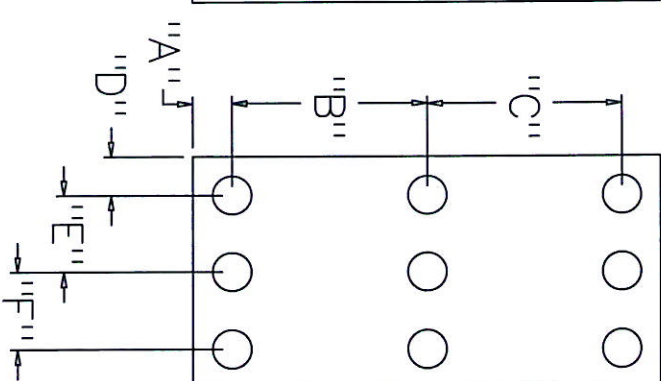


FIGURE #6